



CMP METAL

Corporate Profile

Manufacture of Hospital, Pharmaceutical Equipments,
Furniture and Washing Solutions



CMP[®]
M E T A L

“The Name of Quality”

ISO : 9001:2015

About CMP Metal

Incepted in the year 2006, in Mumbai (Maharashtra, India), we "CMP Metal," are one of the leading company engaged in manufacturing and supplying a comprehensive steel furniture assortment to Hospitals, Pharmaceuticals of various departments like Operation Theatre, Clean Room, CSSD Department, IVF Lab & Cleaning & disinfection etc. As per the varied requirements of clients, these services be availed by them in both standards as well as in customized options as per their requirements and varied specifications with lots of features like low maintenance, premium quality, rigid construction, dimensional accuracy and long service life.

With a highly skilled team of professionals, we are able to offer optimum quality products in committed time frame. Furthermore, we have constructed a well-established infrastructural facility which is installed with all the latest machines and tools that are required for the fabrication of the offered range of products. We have divided our infrastructure into various specialized sections that help us in smooth production process. Rich domain knowledge and vast industry experience make it easy for our professionals to completely understand the exact requirements of clients and deliver the appropriate products within the promised time. Because of the tireless efforts of our professionals, we have been able to provide maximum level of satisfaction to our prestigious clients that result in long-term relationship with them. Being a quality centric organization, we are engaged in offering the finest quality products to the clients that are in complete compliance with the global updated standards.

Our entire business process in guided under the skilled guidance of "Mr. Ajay Panchal & Mr. Sunil Panchal". Their sharp knowledge and business understanding along with collective experience of 70 years of team management make us capable to achieve a well-known position in the market.

Vision, Mission and Values

Vision: To be globally respected organization that provides innovative business solutions, leveraging technology and domain knowledge.

Mission: Our mission is to help our customers to achieve their objectives by providing innovative business solutions. In this process we would create an environment based on trust which would benefit our customers, employees, vendors and society at large.

Values:

- Customer first
- Integrity and transparency
- Entrepreneurship and Innovation
- Business accountability
- Community contribution
- Agility

BHAG (Big Hairy Audacious Goal):

We want to be top manufacturer company of healthcare Industry globally by 31st March 2030, and want to provide 2000 employment.





”

*“Perfection is not attainable.
But if we chase perfection, we can catch excellence.”*

“



01

CSSD Furniture
& Equipments



02

Washing and
Disinfection
SS Equipments



03

Operation Theater
SS Furniture &
Equipments



04

Hospital
Furniture



05

IVF Furniture
& Equipments

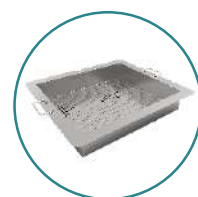


01

CSSD Furniture & Equipments

400 - Instrument Washing Sink With Cabinet

- Construction in type 304 stainless steel with matt finishing
- Square tubular pipe structure
- Raised edge given to prevent water spill
- Two washing sinks and one slope sink for draining
- Two swivel tap common for washing sinks
- Rinse swivel spout mixer tap faucet
- Air gun with spiral PU tube
- Adjustable Height bush for leveling
- Easy to clean & installation
- We do manufacture as per customer requirement



SS Perforated
Instrument Tray



Sizes & Types Available

| # | Model | Dimension L x W x H |
|---|-----------------------------|---------------------------|
| 1 | CMP- 422 | 2300 X 600 X 910 + 150SPL |
| 2 | CMP – 422 R1 – With Cabinet | 2300 X 600 X 910 + 150SPL |
| 3 | CMP- 465 | 2600 X 725 X 910 + 150SPL |
| 4 | CMP – 465 R1 – With Cabinet | 2600 X 725 X 910 + 150SPL |

400 - Wall Mounted Instrument Washing Sink

- Construction in type 304 stainless steel with matt finishing
- Raised Edge given to prevent water spill
- One washing sink and one slope sink for draining water
- Rinse swivel spout mixer tap faucet
- Wall mounting so it's easy to clean and install
- Perforated tray for washing instruments
- Front Removable panel for maintenance
- We do manufacture as per customer requirement



Sizes & Types Available

| # | Model | Dimension L x W x H |
|---|----------|---------------------|
| 1 | CMP- 466 | 1200 X 658 X 611 |

1500 - Instrument Trolley

- Construction in type 304 stainless steel with matt finishing
- Stainless steel tubular framework
- High strength fully argon welded
- 2 / 3 Stainless steel trays (as per requirement)
- Heavy duty caster wheels 125 mm dia with 2 break wheels
- Used in CSSD Department, Operating Room, IVF Department
- We do manufacture as per customer requirement



Sizes & Types Available

| # | Model | Dimension L x W x H |
|---|------------|---------------------|
| 1 | CMP - 1504 | 680 x 450 x 850 |
| 2 | CMP - 1501 | 980 x 550 x 850 |
| 3 | CMP - 1502 | 1070 x 600 x 850 |
| 4 | CMP- 1503 | 1200 x 750 x 850 |

300 - Pass Box - Static-Dynamic

- Construction in type 304 stainless steel with matt finishing
- Fitted with glass door through which material can be seen easily
- Mechanical interlocking arrangement on both sides, one door can be opened at a time
- Easy to install in wall between the clean room and operating room
- Electromagnetic System are available (As per the demand)
- We do manufacture as per customer requirement



Sizes & Types Available

| # | Model | Internal Dimension L x W x H | Dimension L x W x H |
|---|-----------|------------------------------|---------------------|
| 1 | CMP - 303 | 304 x 304 x 304 | 414 x 335 x 414 |
| 2 | CMP - 304 | 457 x 457 x 457 | 567 x 492 x 567 |
| 3 | CMP - 331 | 497 x 578 x 497 | 610 x 610 x 610 |
| 4 | CMP- 306 | 610 x 610 x 610 | 720 x 645 x 720 |

1900 - Linen Folding & Inspection Table

- Construction in type 304 stainless steel with matt finishing
- Square Tubular framework
- Illuminated transparent top surface (As per requirement)
- Magnifying glass (As per requirement)
- Castor wheels with diagonal breaks
- We do manufacture as per customer requirement



Sizes & Types Available

| # | Model | Dimension L x W x H |
|---|------------|---------------------|
| 1 | CMP- 1938 | 1066 x 610 x 900 |
| 2 | CMP - 1924 | 1220 x 610 x 900 |

1900 - Instrumental Packing Workstation

- Used for pre- Sterilization inspection and packing of instruments and equipment
- Construction in type 304 stainless steel with matt finishing
- Square Tubular Pipe in base structure
- Height adjustment leveling bush
- High strength fully argon welded
- Drawer with lock (As per requirement)
- Easy to clean and installation
- We do manufacture as per customer requirement



Sizes & Types Available

| # | Model | Dimension L x W x H |
|---|------------|-------------------------|
| 1 | CMP - 1925 | 2000 x 1400 x 900 + 500 |
| 2 | CMP- 1932 | 1800 x 800 x 854 + 600 |
| 3 | CMP - 1933 | 2100 x 800 x 854 + 600 |

1900 - CSSD Basket Rack

- Construction in type 304 stainless steel with matt finishing
- SS pipe square tube structure
- 3 free standing section to hold & basket in a vertical
- Suitable for transportation of sterilization baskets
- Caster wheels with 2 brakes & 2 without brakes (As per demand)
- Available trolley type & standing type
- Available in Single type (4 baskets) / Double type (8 baskets) & triple (24 baskets)
- We do manufacture as per customer requirement



CSSD Basket

Sizes & Types Available

| # | Model | Dimension L x W x H | Basket Holding Capacity |
|---|------------|---------------------|-------------------------|
| 1 | CMP - 1939 | 645 x 450 x 1970 | 8 |
| 2 | CMP - 1902 | 1240 x 450 x 1970 | 16 |
| 3 | CMP - 1930 | 1835 x 450 x 1970 | 24 |

1900 - CSSD Linen Storage Rack

- Construction in type 304 stainless steel with matt finishing
- Square steel pipe
- Inner Shelves 8mm Wire rod
- 5 fully welded shelves with plain top
- Vertical Frame Structure
- Nylon adjustable leveling bush
- Easy to clean and install
- We do manufacture as per customer requirement



Sizes & Types Available

| # | Model | Dimension L x W x H | Shelves |
|---|------------|---------------------|---------|
| 1 | CMP - 1917 | 1800 x 500 x 1800 | 5 |

1900 - Closed Transportation Trolley

- Construction in type 304 stainless steel with matt finishing
- Lockable door with handle
- 2nos fixed shelves
- Castor wheel with 2 breaking wheels
- High strength fully argon welded
- Easy to clean surface
- We do manufacture as per customer requirement



Sizes & Types Available

| # | Model | Dimension L x W x H |
|---|--------------------------|---------------------|
| 1 | CMP- 1931 | 1200 x 570 x 1340 |
| 2 | CMP- 1937 A With Railing | 915 x 570 x 1475 |
| 3 | CMP- 1937 B | 915 x 570 x 1340 |

1900 - CSSD Basket Distribution Trolley

- Construction in type 304 stainless steel with matt finishing
- Square pipe frame structure for doors
- 10 basket holding arrangement
- Baskets (As per requirement)
- Transparent sheet at 4 sides
- Castor wheels with 2 breaking wheels
- High strength fully argon welded
- Easy to clean Surface
- We do manufacture as per customer requirement



Sizes & Types Available

| # | Model | Dimension L x W x H |
|---|-----------|---------------------|
| 1 | CMP- 1918 | 900 x 630 x 1500 |

100 - Stainless Steel Instrument Cabinet

- Construction in type 304 stainless steel with matt finishing
- Two removable stainless-steel shelves in down side
- Inner small cabinet (As per Requirement)
- Glass in doors for clear visibility of products and instruments
- The lockable door with steel handle
- Available trolley type & standing type
- We do manufacture as per customer requirement



Sizes & Types Available

| # | Model | Dimension L x W x H | Removable Shelves | Doors |
|---|------------------------|---------------------|-------------------|-------|
| 1 | CMP- 108 without wheel | 1220 X 450 X 1775 | 5 | 4 |
| 2 | CMP- 109 with wheel | 1220 X 450 X 1950 | 5 | 4 |
| 3 | CMP- 112 with wheel | 1220 X 450 X 1950 | 2 + 1 Locker | 2 |

1900 - Revolving Stool

- Construction in SS / MS Powder coated both
- Round pipe for fixed legs
- Height adjustable up to 6inch
- Nylon bush for grip or wheel as per requirement
- High strength fully welded
- We do manufacture as per customer requirement



Sizes & Types Available

| # | Model | Dimension L x W x H |
|---|-----------|---------------------------|
| 1 | CMP- 1904 | 457 to 610 H X od 350 Top |

1900 - Wire Mesh Instrument Basket

- Construction in type 304 stainless steel with matt finishing
- Mesh rod dia 3mm
- Usage for sterilization area
- Coved corners
- Perfect wire mess that allow easy drainage
- Custom sizes available



Sizes & Types Available

| # | Model | Dimension L x W x H |
|---|-------------|---------------------|
| 1 | CMP- 1940 A | 250 X 250 X 75 |
| 2 | CMP- 1940 | 549 X 259 X 110 |





02

Washing and
Disinfection
SS Equipments

500-800 - Scrub Sink

- Construction in type 304 stainless steel with matt finishing
- Coved corners into ¼" radius with sloppy curve in basin to eliminate back splash
- For water dispenser we have Digital sensor, Infrared sensor, Foot, Knee and Elbow operated arrangement option
- For Soup dispenser we have Sensor, Foot, Knee, and Elbow operated arrangement option
- Hot and Cool water arrangement is available
- Front Removable Panels for routine maintenance and for refilling liquid
- Easy to clean surface and Installation at any place
- We do manufacture as per customer requirement



**Scrub Timer
Controller Sensor**

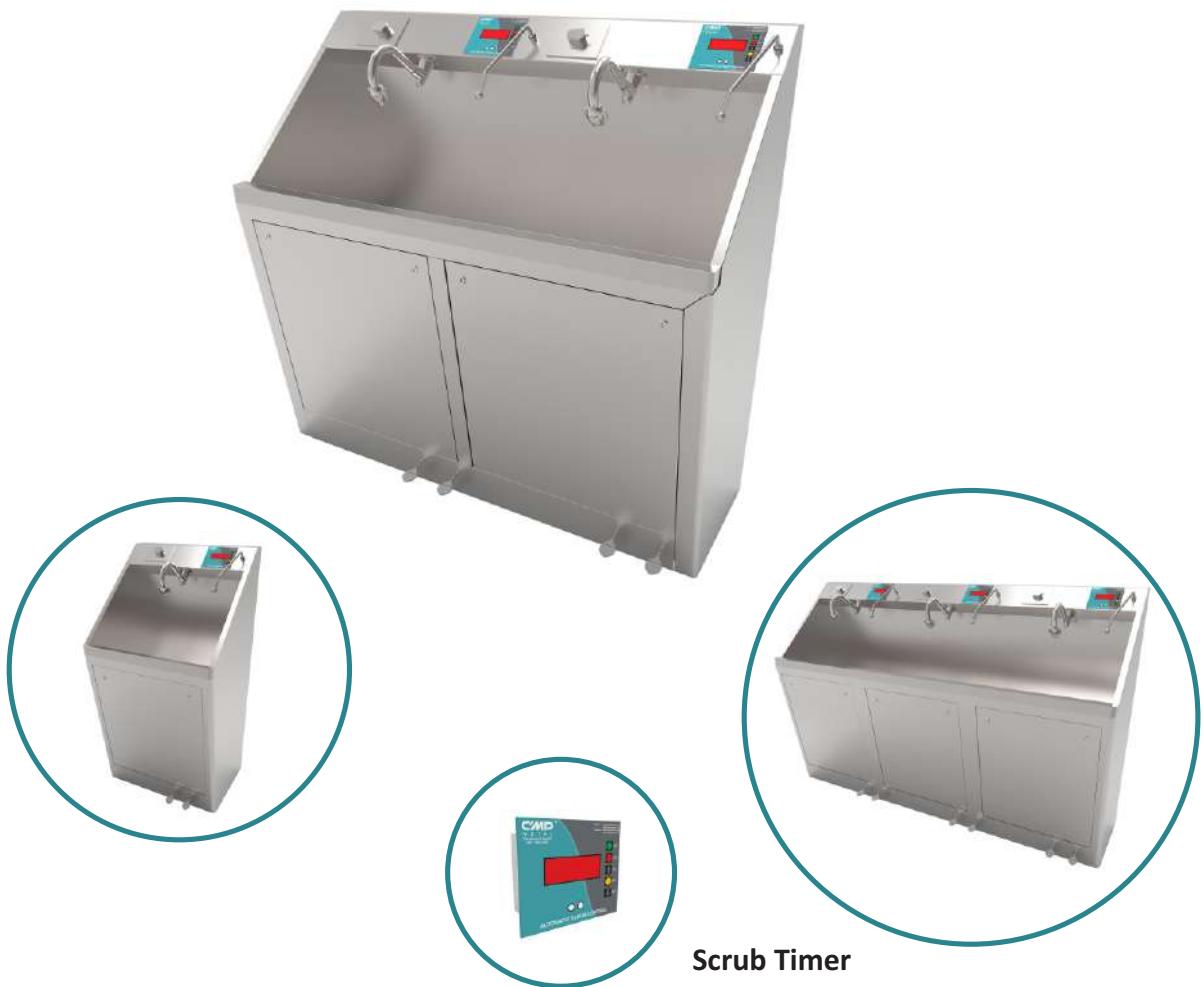
Sizes & Types Available

| # | Model | Taps | Dimension L x W x H |
|---|-----------|------|--|
| 1 | CMP - 539 | 1 | 600 X 508 X 1360 - Operating Height 910 |
| 2 | CMP - 657 | 2 | 1300 X 508 X 1360 - Operating Height 910 |
| 3 | CMP - 737 | 3 | 1880 X 508 X 1360 - Operating Height 910 |

Note:- This sink have digital sensor & foot option for water dispenser and foot option for soup dispenser with hot and cool water arrangement

900 - Tapper Scrub Station

- Construction in type 304 stainless steel with matt finishing
- Deep sloping basin to eliminate back splash of water
- For water dispenser we have Digital sensor, Infrared sensor, Foot and Knee operated arrangement option
- For Soup dispenser we have Sensor, Foot and Knee operated arrangement option
- Hot and Cool water arrangement is available
- Front removable panels for routine maintenance and for refilling liquid
- Easy to clean surface & Installation at any place
- We do manufacture as per customer requirement



**Scrub Timer
Controller Sensor**

Sizes & Types Available

| # | Model | Taps | Dimension L x W x H |
|---|------------|------|--|
| 1 | CMP - 909 | 1 | 700 X 625 X 1360 - Operating Height 910 |
| 2 | CMP - 1201 | 2 | 1400 X 625 X 1360 - Operating Height 910 |
| 3 | CMP - 1301 | 3 | 2100 X 625 X 1360 - Operating Height 910 |

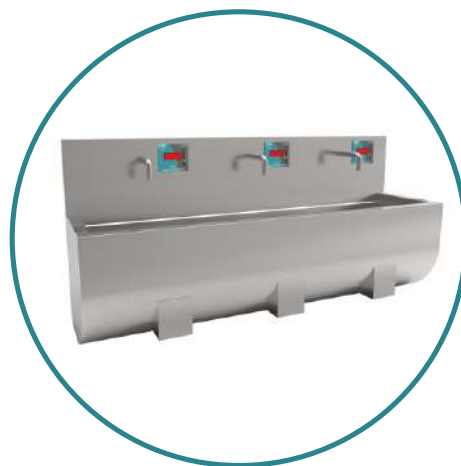
Note:- This sink have digital sensor & foot option for water dispenser and foot option for soup dispenser with hot and cool water arrangement

1000 - Wall Mounted Sink

- Construction in type 304 stainless steel with matt finishing
- Sloppy curve in basin to eliminate back splash of water
- For water dispenser we have Digital sensor, Infrared sensor, Foot, Knee and Elbow operated arrangement option
- For Soup dispenser we have Sensor, Knee and Elbow operated arrangement option
- Hot and Cool water arrangement is available
- Hot & Cool water arrangement as per requirement
- Easy to clean surface & Installation at any place
- We do manufacture as per customer requirement



**Scrub Timer
Controller Sensor**



Sizes & Types Available

| # | Model | Taps | Dimension L x W x H |
|---|------------|------|---|
| 1 | CMP - 1047 | 1 | 600 X 508 X 883 - Operating Height 910 |
| 2 | CMP - 1036 | 2 | 1300 X 508 X 883 - Operating Height 910 |
| 3 | CMP - 1039 | 3 | 1800 X 508 X 883 - Operating Height 910 |

Note:- This sink have digital sensor & knee option for water dispenser.

1100 - Tapper Wall Mounted Sink

- Construction in type 304 stainless steel with matt finishing
- Deep sloping basin to eliminate back splash of water
- For water dispenser we have Digital sensor, Infrared sensor and Knee operated arrangement option
- For Soup dispenser we have Sensor and Knee operated arrangement option
- Hot and Cool water arrangement is available
- Easily openable knee panels for maintenance and refilling scrub liquid
- Easy to clean surface & Installation at any place
- We do manufacture as per customer requirement



**Scrub Timer
Controller Sensor**



Sizes & Types Available

| # | Model | Taps | Dimension L x W x H |
|---|-------------|------|---|
| 1 | CMP - 1101A | 1 | 700 X 698 X 927 - Operating Height 910 |
| 2 | CMP - 1101B | 2 | 1627 X 698 X 927 - Operating Height 910 |
| 3 | CMP - 1101C | 3 | 2100 X 698 X 927 - Operating Height 910 |

Note:- This sink have digital sensor & knee option for water dispenser and knee option for soup dispenser with hot and cool water arrangement

400 - Sluice Sink (Dirty Utility Sink)

- Construction in type 304 stainless steel with matt finishing
- Fully welded seamless curves to ensuring for best hygiene
- Flushing sluice bowl with flushing rim in hopper
- Product is wall mounted and with stand (As per requirement)
- Faucet jet spray, Flushing valve and Mixer and Basic taps (As per requirement)
- P Trap for drainage
- Inner and Outer flush Tank (As per requirement)
- We do manufacture as per customer requirement



Sizes & Types Available

| # | Model | Dimension L x W x H | Tank | Tap | Stand |
|---|----------|---------------------|-------|-----|-------|
| 1 | CMP- 411 | 1600 x 610 x 910 | Outer | Yes | Yes |
| 2 | CMP- 412 | 1600 x 610 x 910 | - | No | No |
| 3 | CMP- 413 | 1600 x 610 x 910 | Outer | Yes | No |
| 4 | CMP- 414 | 1600 x 610 x 910 | Outer | No | No |
| 5 | CMP- 454 | 1600 x 650 x 910 | Inner | Yes | No |

Hopper Size: - Dia 365 | Rectangle Sink Size: - 500L X 400W X 200H

400 - Slop Hopper

- Construction in type 304 stainless steel with matt finishing
- Fully welded seamless curves to ensuring for best hygiene
- Flushing sluice bowl with flushing rim in hopper
- Product is wall mounted and with stand (As per requirement)
- Faucet jet spray, Flushing Valve and Mixer and Basic taps (As per requirement)
- P Trap for drainage
- We do manufacture as per customer requirement



Sizes & Types Available

| # | Model | Dimension L x W x H | Tank | Tap |
|---|----------|---------------------|-------|-----|
| 1 | CMP- 409 | 600 X 600 X 910 | Outer | No |
| 2 | CMP- 410 | 1300 X 600 X 910 | Outer | No |
| 3 | CMP- 415 | 850 X 610 X 910 | Outer | Yes |

200 - Bed Pan Rack

- Construction in type 304 stainless steel with matt finishing
- Product is wall mounted so it's easy to install and clean
- Drip tray
- We do manufacture as per customer requirement



Sizes & Types Available

| # | Model | Dimension L x W x H | Urinal Bottle | Bedpan Holders |
|---|----------|---------------------|---------------|----------------|
| 1 | CMP- 203 | 1000 x 260 x 570 | 6 | 8 |
| 2 | CMP- 202 | 800 x 260 x 570 | 7 | 8 |

400 - Plaster Sink

- Construction in type 304 stainless steel with matt finishing
- Fully welded seamless curves to ensuring for best hygiene
- Suitable for hospitals, healthcare establishments and leisure centres
- SS bucket with cover and handle
- With tap or without tap (As per requirement)
- Wall mounted so it's easy to clean & Install
- We do manufacture as per customer requirement



Sizes & Types Available

| # | Model | Dimension L x W x H |
|---|----------|---------------------|
| 1 | CMP- 423 | 1300 x 600 x 310 |

400 - Dialyzer Washing Sink

- Construction in type 304 stainless steel with matt finishing
- Fully welded seamless curves to ensuring for hygiene
- SS perforated/mess tray for keeping the dialyzer (As per requirement)
- Hot & Cool water arrangement (As per requirement)
- Pressure Regulating Valve with gauge (As per requirement)
- 1¼" BSP waste coupling
- Easy to clean surface and installation
- We do manufacture as per customer requirement



Sizes & Types Available

| # | Model | Dimension L x W x H | Operating Height | Type |
|---|------------|---------------------|------------------|----------------|
| 1 | CMP- 467 A | 900 X 610 X 965 | 800 | Single Station |
| 2 | CMP- 467 B | 1700 x 610 x 965 | 800 | Double Station |
| 3 | CMP- 467 C | 2400 x 610 x 965 | 800 | Triple Station |

230 - Bed Pan Sink

- Construction in type 304 stainless steel with matt finishing
- Raised edge given to prevent water spill
- Sluice bowl with flushing mechanism
- P Trap in stainless steel
- Water spray nozzles
- Faucet jet spray and Angel Valve (As per requirement)
- Hot & Cool water facility available (As per requirement)
- Product is wall mounted so it's easy to install and clean
- We do manufacture as per customer requirement



Sizes & Types Available

| # | Model | Dimension L x W x H |
|---|-----------|---------------------|
| 1 | CMP - 246 | 625 X 550 X 490 |
| 2 | CMP - 255 | 584 x 477 x 634 |

400 - Portable Sink

- Construction in type 304 stainless steel with matt finishing
- 5" Castor wheels with diagonal break
- Electrical requirements: 230V-in – 12V-out
- Jaquar pillar cock
- Lockable doors with double side push handle
- Liquid soap dispenser (as per requirement)
- Tissue paper holder (as per requirement)
- Water tanks : 20 liter each for fresh and waste water
- We do manufacture as per customer requirement

Sizes & Types Available

| # | Model | Dimension L x W x H |
|---|-----------|---------------------|
| 1 | CMP - 475 | 762 X 509 X 1310 |



1400 - Catheter Washing Sink

- Construction in type 304 stainless steel with matt finishing
- Fully welded seamless curves to ensuring for best hygiene
- Wall mounting hanging bracket given
- Water/ Air inlet facility
- Air Pressure 4 to 6 bar
- Easy to clean & Install at any place
- We do manufacture as per customer requirement



Sizes & Types Available

| # | Model | Dimension L x W x H | Operating Height |
|---|-----------|---------------------|------------------|
| 1 | CMP- 1402 | 900 X 610 X 1565 | 800 |
| 2 | CMP- 1403 | 1000 X 610 X 1565 | 800 |
| 3 | CMP- 1401 | 1200 X 610 X 1565 | 800 |

400 - Dirty Utility MOP Sink

- Construction in type 304 stainless steel with matt Finishing
- Curved corners of sink
- Strainer (As per requirement)
- Mixer tap (As per requirement)
- 4 Stainless steel legs with adjustable bush
- 3" waste coupling and inlet ½ bsp
- Easy to clean surface & Installation at any place
- We do manufacture as per customer requirement



Sizes & Types Available

| # | Model | Dimension L x W x H | Bowl Size |
|---|----------|-----------------------|-----------------|
| 1 | CMP- 460 | 700 X 600 X 700 + 300 | 645 x 515 x 450 |

400 - Endoscope Washing Sink

- Construction in type 304 stainless steel with Matt Finishing
- Stretchable spring-loaded faucet
- Perforated tray to wash instruments
- Edges raised to prevent water drip
- Hot & Cool water arrangement (As per requirement)
- Two swivel mixer taps
- Air gun spiral pu tube
- Easy to clean & Install
- We do manufacture as per customer requirement



Sizes & Types Available

| # | Model | Dimension L x W x H | Operating Height | Square Sink | Round Sink |
|---|--------------|------------------------|------------------|-------------|------------|
| 1 | CMP- 402 | 2100 x 600 x 900 + 300 | 910 | 2 | - |
| 2 | CMP- 421 | 1600 x 600 x 910 + 150 | 910 | 1 | 1 |
| 3 | CMP- 421 R-2 | 1600 x 600 x 910 + 150 | 910 | 2 | 1 |





03

Operation Theater
SS Furniture &
Equipments

1500 - Instrument Trolley

- Construction in type 304 stainless steel with matt finishing
- Stainless Steel Tubular Framework
- High strength fully argon welded
- 2 / 3 Stainless Steel Trays (as per requirement)
- Heavy duty castors wheels of 125 mm dia with 2 breaking wheels
- Used in CSSD Department, Operating Room, IVF department
- We do manufacture as per customer requirement

Sizes & Types Available

| # | Model | Dimension L x W x H | Shelves |
|---|-----------|---------------------|---------|
| 1 | CMP- 1501 | 980 X 550 X 850 | 2 |
| 2 | CMP- 1502 | 1070 X 600 X 850 | 2 |
| 3 | CMP- 1503 | 1200 X 750 X 850 | 2 |
| 4 | CMP- 1504 | 680 X 450 X 850 | 2 |
| 5 | CMP- 1506 | 762 X 508 X 850 | 2 |



1500 - Mayo Trolley

- Construction in type 304 stainless steel with matt finishing
- Stainless steel tray
- Height adjustable- 750 to 1250mm
- High strength fully argon welded
- High quality castor wheels provided
- We do manufacture as per customer requirement

Sizes & Types Available

| # | Model | Dimension L x W x H |
|---|-----------|-----------------------|
| 1 | CMP- 1515 | 600 X 400 X 700- 1200 |



1900 - Kick Bucket

- Construction in type 304 stainless steel with matt finishing
- For easy moving 3 wheels provided
- We do manufacture as per customer requirement

Model No: CMP - 1903



300 - Pass box Mechanical-Electromagnetic

- Construction in type 304 stainless steel with matt finishing
- Fitted with glass on door through which material can be seen easily
- Electromagnetic system is available
- Easy to install in wall between the clean room and operating room
- Mechanical interlocking arrangement (As per the demand)
- We do manufacture as per customer requirement



Sizes & Types Available

| # | Model | Internal Working Area Dimension L x W x H | Unit Dimension L x W x H |
|---|----------|---|--------------------------|
| 1 | CMP- 348 | 304 X 304 X 304 | 422 X 369 X 488 |
| 2 | CMP- 349 | 457 X 457 X 457 | 575 X 524 X 641 |
| 3 | CMP- 350 | 492 X 543 X 426 | 610 X 610 X 610 |
| 4 | CMP- 351 | 610 X 610 X 610 | 728 X 677 X 794 |

2200 - IV Stand

- Construction in SS with matt finish and MS with powder coated
- height adjustable by hand
- Stand can be equipped with hooks or bottle holders
- Easy move at any place
- High strength and durable



Model No: CMP - 2222

1500 - Crash Cart Trolley

- Construction in type 304 stainless steel with matt finishing
- High strength fully argon welded
- Ten removable bins as per requirement
- two modular storage units of Six drawers
- Oxygen cylinder holder & IV Stand Rod as per requirement
- High quality Castor Wheels with Two breaking wheel
- We do manufacture as per customer requirement



Model No: CMP - 1527 | Size: 736L X 381W X 1524H

1500 - Laparoscopic Monitor Trolley

- Construction in type 304 stainless steel with matt finishing
- S.S. Shelves, Rails to cover two sides of top
- Trolley has socket to receive 5/15 Amp – 230 V A/C – pin plug two inputs each with safety switch on off power on led lamp socket
- Two handles for ease of relocation
- 5 inches castor wheel with two brake wheel
- High strength fully argon welded
- We do manufacture as per customer requirement



Sizes & Types Available

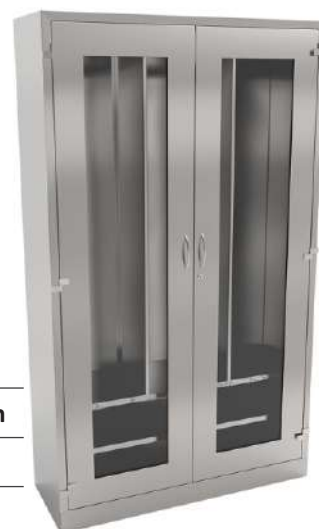
| # | Model | Dimension L x W x H | Shelves/Drawer | Cylinder Arrangement | Monitor | Laptop Tray |
|---|-----------|---------------------|----------------|----------------------|---------|-------------|
| 1 | CMP- 1524 | 692 X 735 X 1468 | 4/1 | Yes | Yes | No |
| 2 | CMP- 1537 | 650 X 500 X 1450 | 2/2 | No | Yes | Yes |

100 - Cathter Storage Cabinet

- Construction in type 304 stainless steel with matt finishing
- Glass/Acrylic in doors for clear visibility of product
- Vertically hanging design
- Two hinged lockable door with steel handle
- We do manufacture as per customer requirement

Sizes & Types Available

| # | Model | Dimension L x W x H | Track/Hook | Shelves/Compactment | Partation |
|---|-----------|---------------------|------------|---------------------|-----------|
| 1 | CMP - 121 | 1220 X 450 X 2100 | 9/54 | 2/3 | 3 in Side |
| 2 | CMP - 120 | 1220 X 300 X 1800 | 6/24 | 0/3 | 2 |
| 3 | CMP - 131 | 762 X 300 X 1800 | 4/16 | - | - |



100 - Operating Room Instrument Cabinet

- Construction in type 304 stainless steel with matt finishing
- Removable and adjustable stainless steel shelves
- Inner small cabinet as per requirement
- Glass/Acrylic in doors for clear visibility of products and instruments
- The lockable door with steel handle
- Easy to clean surface
- We do manufacture as per customer requirement



Sizes & Types Available

| # | Model | Dimension L x W x H | Shelves | Doors | Wheel |
|---|----------|---------------------|--------------|-------|-------|
| 1 | CMP- 101 | 1220 X 300 X 2100 | 5 | 2 | No |
| 2 | CMP- 102 | 700 X 300 X 2100 | 5 | 2 | No |
| 3 | CMP- 103 | 1220 X 300 X 1800 | 3 | 2 | No |
| 4 | CMP- 107 | 650 X 300 X 2100 | 5 | 1 | No |
| 5 | CMP- 109 | 1220 X 450 X 1950 | 5 | 2 | Yes |
| 6 | CMP- 112 | 1220 X 450 X 1775 | 4 + 1 Locker | 4 | Yes |

100 - Endoscopic Cabinet

- Construction in type 304 stainless steel with matt finishing
- High strength fully argon welded
- Clear visibility through Acrylic sheets given in doors and internal lighting
- All hanger and inside area come with the full protection of Endoscope from damage
- The lockable door with steel handle
- Leveling adjustment bush
- Easy to clean and Installation at any place
- We do manufacture as per customer requirement



Sizes & Types Available

| # | Model | Dimension L x W x H |
|---|----------|---------------------|
| 1 | CMP- 113 | 1220 X 450 X 2200 |



04

Hospital Furniture



1500 - Emergency Recovery Trolley

- Construction in SS & MS both
- Framework made of tubular/ rectangular pipe
- Height adjusted by foot operated hydraulic pump from 65 cm to 95 cm
- Backrest raised on ratchet
- Synthetic rubber covered on handles for grip
- Oxygen Cylinder, file holder and IV Stand
- High strength fully argon welded
- X-Ray cassette holder
- Two sections removable & X-Ray permeable stretcher top
- 2 breaking and 2 normal castor wheels
- We do manufacture as per customer requirement



Sizes & Types Available

| # | Model | Dimension L x W x H | Material |
|---|-----------|---------------------|-----------------|
| 1 | CMP- 1545 | 2100 X 600 X 730 | Stainless Steel |

1500 - Non Magnetic MRI Trolley

- Construction in type 304 stainless steel with matt finishing
- Fully non-magnetic construction for specially MRI Machine
- Framework made of tubular/rectangular pipe
- Backrest raised on ratchet
- Sponge mattress
- High strength fully argon welded
- 2 breaking and 2 normal castor wheels
- We do manufacture as per customer requirement



Sizes & Types Available

| # | Model | Dimension L x W x H | Material |
|---|-----------|---------------------|-----------------|
| 1 | CMP- 1539 | 2332 X 559 X 737 | Stainless Steel |

1500 - Patient Stretcher Trolley

- Construction in SS & MS both
- Framework made of tubular/ rectangular pipe
- Backrest raised on ratchet
- Adjustable swing away side railing
- Synthetic rubber covered on handles for grip
- Oxygen cylinder and file holder
- High strength fully argon welded
- 2 breaking and 2 normal castor wheels
- We do manufacture as per customer requirement



Sizes & Types Available

| # | Model | Dimension L x W x H | Material |
|---|-----------|---------------------|-----------------|
| 1 | CMP- 1525 | 2083 X 560 X 737 | Stainless Steel |

1500 - Folding Stretcher Trolley

- Construction in SS & MS both
- Framework made of tubular/rectangular pipe
- Two side foldable
- High strength fully argon welded
- 2 breaking and 2 normal castor wheels
- We do manufacture as per customer requirement



Sizes & Types Available

| # | Model | Dimension L x W x H | Material |
|---|-----------|---------------------|-----------------|
| 1 | CMP- 1516 | 2140 X 510 X 786 | Stainless Steel |

1500 - Jumbo Oxygen Cylinder Trolley

- Construction in SS with matt finish
- High strength fully argon welded
- We do manufacture as per customer requirement

Sizes & Types Available

| # | Model | Dimension L x W x H | Material |
|---|-----------|---------------------|-----------------|
| 1 | CMP- 1535 | 432 X 340 X 1325 | Stainless Steel |



1500 - Waste Dustbin Trolley

- Construction in type 304 stainless steel with matt finishing
- High quality 4" castor wheels with two breaking wheels
- High strength fully argon welded
- Custom design as per customer requirement

Sizes & Types Available

| # | Model | Dimension L x W x H |
|---|------------|---------------------|
| 1 | CMP - 1517 | 1272 X 419 X 1250 |
| 2 | CMP - 1518 | 1600 X 495 X 1250 |
| 3 | CMP - 1519 | 1775 X 515 X 1250 |



1500 - Dressing Trolley

- Construction in type 304 stainless steel with matt finishing
- SS tubular frame structure
- Protective railing on all four sides
- High strength fully argon welded
- Two shelves with S.S bowl and S.S bucket
- High quality castor wheels with two breaking wheels
- We do manufacture as per customer requirement

Sizes & Types Available

| # | Model | Dimension L x W x H |
|---|-----------|---------------------|
| 1 | CMP- 1505 | 680 X 450 X 946 |



3000 - Staff Locker

- Construction in SS & MS both
- Different types lockers available
- Easy to move and Install at any place
- We do manufacture as per customer requirement



Sizes & Types Available

| # | Model | Dimension L x W x H | Locker/Compartments |
|---|---------------------------------|---------------------|------------------------------|
| 1 | File Locker | 914 x 381 x 1829 | 4 Compartments |
| 2 | Locker (CMP-3016) | 914 x 483 x 1981 | 6A/8B/9C/12D/18E/24F Lockers |
| 3 | Store Well Cupboard | 914 x 483 x 1981 | 4 Shelf |
| 4 | Store Well Cupboard with Locker | 914 x 483 x 1981 | 3 Shelf + 1 Locker |
| 5 | Library Glass Store Well | 914 x 483 x 1981 | 4 Shelf |
| 6 | Filling Cabinet | 457 x 686 x 1041 | 3 Drawer |





05

IVF Furniture & Equipments

2300 - IVF ICSI Table with and without Drawer

- Construction in type 304 stainless steel with matt finishing
- Easy to move and install at any place
- Designed and manufactured in India using
- The Anti-Vibration Table features a passive damping mechanism to isolate the microscope from vibrations during IVF and ICSI procedures
- We do manufacture as per customer requirement



Sizes & Types Available

| # | Model | Dimension L x W x H | Drawer |
|---|------------|---------------------|--------|
| 1 | CMP - 2304 | 1066 X 711 X 762 | No |
| 2 | CMP - 2312 | 1066 X 711 X 762 | Yes |

2300 - IVF Centrifuge Machine Table

- Construction in type 304 stainless steel with matt finishing
- High strength fully argon welded
- Easy to clean
- Lockable door with handle
- Easy to move and install at any place
- We do manufacture as per customer requirement



Sizes & Types Available

| # | Model | Dimension L x W x H | Cabinet |
|---|------------|---------------------|--------------|
| 1 | CMP - 2301 | 400 X 762 X 355 | Half Cabinet |
| 2 | CMP - 2308 | 400 X 762 X 355 | Full Cabinet |

300 - Pass Box - Dynamic

- Construction in type 304 stainless steel with matt finishing
- High strength fully argon welded
- Easy to clean
- Door with handle
- Fitted with glass on door through which material can be seen easily
- Electromagnetic interlocking arrangement (As per the demand)
- We do manufacture as per customer requirement
- Easy to install in wall between the clean room and operating room
- Mechanical interlocking arrangement for on both sides, one door can be opened at a time



Sizes & Types Available

| # | Model | Internal Working Area Dimension L x W x H | Unit Dimension L x W x H |
|---|----------|---|--------------------------|
| 1 | CMP- 348 | 304 x 304 x 304 | 422 x 369 x 488 |
| 2 | CMP- 349 | 457 x 457 x 457 | 575 x 524 x 641 |
| 3 | CMP- 350 | 492 x 543 x 426 | 610 x 610 x 610 |
| 4 | CMP- 351 | 610 x 610 x 610 | 728 x 677 x 794 |

2300 - IVF Incubator Box Moving Trolley

- Construction in type 304 stainless steel with matt finishing
- High strength fully argon welded
- For easy moving 4 wheels provided
- Protective railing on all four sides
- High quality castor wheels with two breaking wheels
- Easy to move and install at any place
- We do manufacture as per customer requirement



Sizes & Types Available

| # | Model | Dimension L x W x H | Compartments |
|---|------------|---------------------|--------------|
| 1 | CMP - 2302 | 914 X 381 X 914 | 3 |

2300 - IVF Heracell Incubators Table

- Construction in type 304 stainless steel with matt finishing
- High strength fully argon welded
- For easy moving 4 wheels provided
- High quality castor wheels with two breaking wheels
- Easy to move and install at any place
- We do manufacture as per customer requirement

Sizes & Types Available

| # | Model | Dimension L x W x H | Wheels |
|---|------------|---------------------|--------|
| 1 | CMP - 2309 | 686 X 762 X 774 | No |
| 2 | CMP - 2314 | 686 X 762 X 774 | Yes |



2300 - Obstetric Labour Table

- Construction in type 304 stainless steel with matt finishing
- High strength fully argon welded
- S.S. hand grips, rubber padded
- S.S. lithotomic rods
- S.S. three side removable railing
- Gas spring assisted Trendelenburg position
- Complete with S.S. head and side railings
- Middle section with "U" cut
- Leg end section can slide completely under main frame
- Three Section top, Backrest adjustable on ratchet
- Easy to move and install at any place
- We do manufacture as per customer requirement



Sizes & Types Available

| # | Model | Dimension L x W x H |
|---|------------|---------------------|
| 1 | CMP - 2307 | 1870 X 810 X 762 |

2300 - Cryocan Trolley

- Construction in type 304 stainless steel
- High strength fully argon welded
- Easy to move and install at any place
- High Quality castor wheels provided

Sizes & Types Available

| # | Model | Dimension OD x H |
|---|------------|------------------|
| 1 | CMP - 2311 | 482 x 147 |
| 2 | CMP - 2313 | 425 x 147 |



2300 - IVF Benchtop Incubator Trolley

- Construction in type 304 stainless steel with matt finishing
- High strength fully argon welded
- Easy to clean
- Easy to move and install at any place
- High quality castor wheels with two breaking wheels
- We do manufacture as per customer requirement

Sizes & Types Available

| # | Model | Dimension L x W x H |
|---|------------|---------------------|
| 1 | CMP - 2303 | 762 X 686 X 170 |



2300 - IVF Biopsy Guide

- Construction in type 304 or 316 stainless steel as per customer requirement
- S.S. lithotomic rods
- Easy to use
- Easy to clean
- High strength and durable

Sizes & Types Available

| # | Model | SAMSUNG SCANNER TVTR PROBE BIOPSY GUIDE |
|---|------------|--|
| 1 | CMP - 2305 | |



Our Clients

Hospitals



Pharmaceutical, Labs & Food Industry



Certifications

- Certificate of Compliance
- ISO certificate of UKAS Management System
- ISO certificate of The National Accreditation Board for Certification Bodies
- Udyog Aadhar Certificate
- GST Certificate (27AMKPP5212F1Z3)
- Import Export Code Certificate
- National Small Industries Corporation Certificate

Upcoming Products

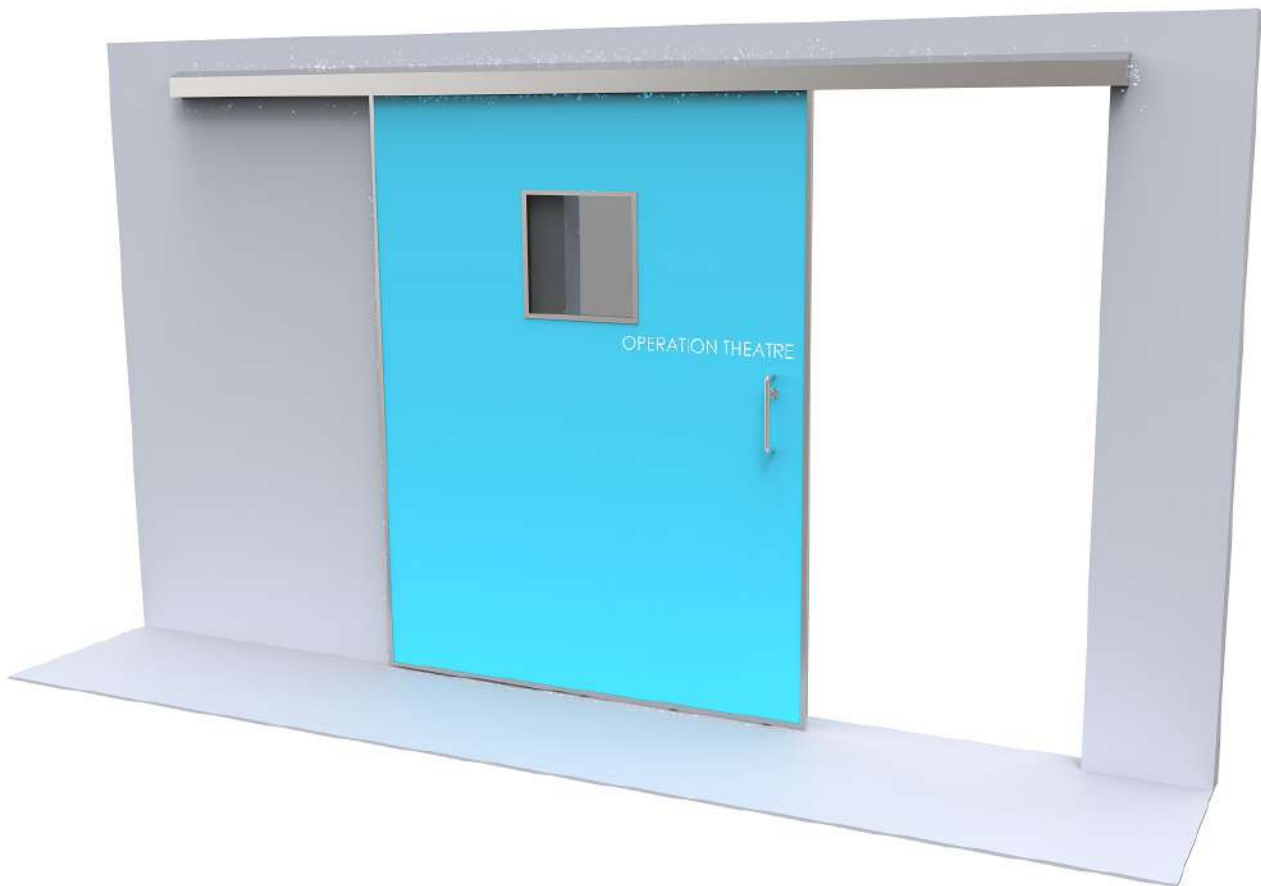
Bedpan Washer



Instrument Washer



Hermetically Sealed Door



Warmer Cabinet



Countries in Which We Export



United Arab Emirates

Africa

Nepal

Kuwait

Bangladesh

Qatar

Mauritius

Oman

Brunei

Serbia

**Our products have reached in all the states of India and 10+ countries across the globe.
We are looking forward to more global opportunities in near future.**

Amazing After Sales Services

CMP Metal guarantees professional maintenance at reasonable cost and services charges. From keeping your machine in prime condition and ensuring a long-term supply of spare parts to providing outstanding training for in-house technicians and end users, we go the extra mile to ensure the safety of patients and personnel.

More efficiency with uptime service and maintenance.



We are certified by:



International
Organization for
Standardization

CONTACT US:



Gala No: A 5/B Ground Floor, Hatkesh Udyog Nagar,
Mira Road (E), Thane, India - 401107.



+91 81690 17026
+91 98198 72097



sales@cmpmetal.com
www.cmpmetal.com | www.cmpmetal.co.in

Follow us on:     

Product development is a continuous process.
Consequently the data introduced in this leaflet is
subject to change without prior notice.
For fastest support contact our sales office.

